

NO.	DESCRIPTION	DATE

BILLY MITCHELL AIRPORT (HSE)

PAVEMENT REHABILITATION PROJECT
NCDOT PROJECT NO. 36244.74.1.1

53262 BILLY MITCHELL ROAD
FRISCO, NC 27936

ISSUED FOR BID



SHEET TITLE

**PAVING DETAILS
SHEET 2 OF 2**

DATE **SEPTEMBER 16, 2024**

SCALE **NTS**

DRAWN BY **SSD**

CHECKED BY **RDB**

APPROVED BY **RDB**

WSP PROJECT NUMBER **188695-05**

SHEET NUMBER

C5.02

SHEET 17 OF 26

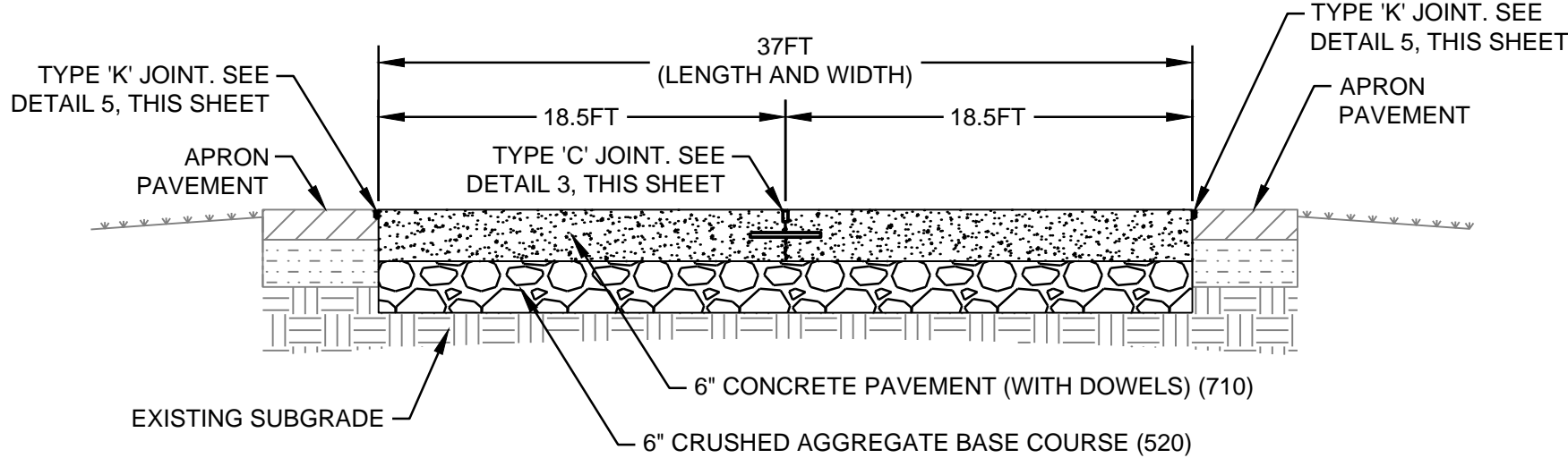
SCALE (S) AS NOTED ON THIS SHEET ARE BASED ON A FULL SIZE 22 X 34 SHEET.

NOTES:

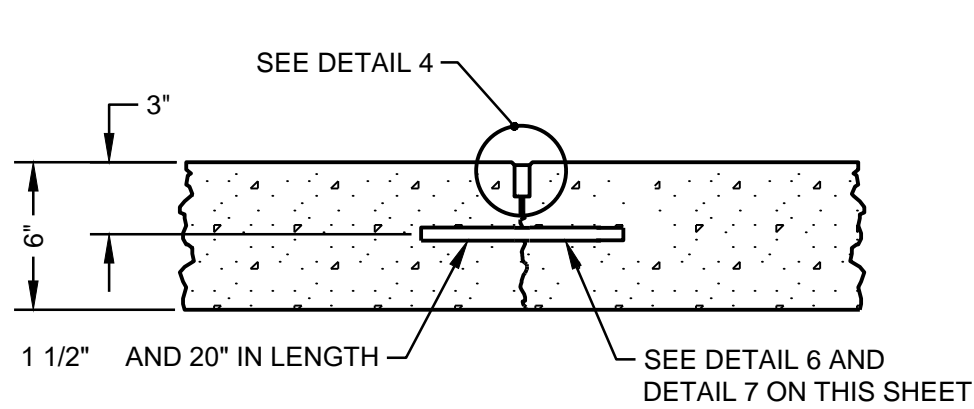
- AFTER MILLING, PRIOR TO OVERLAY, CLEAN EXISTING CRACKS OF ALL LOOSE MATERIAL AND VEGETATION. ROUT AS REQUIRED. REMOVE ALL EXISTING CRACK SEALANT. TREAT REMAINING EXISTING VEGETATION WITHIN THE MILLED PAVEMENT PER HERBICIDE POLICY IN NOTE 4 BELOW. TREATMENT SHALL BE INCIDENTAL TO CRACK REPAIR.
- LOCATIONS FOR CRACK REPAIR MUST BE COORDINATED WITH THE ENGINEER.
- CRACK REPAIR MUST BE PERFORMED IN ACCORDANCE WITH NCDOT SPECIFICATION SECTION 657, SEAL EXISTING PAVEMENT CRACKS AND JOINTS.
- HERBICIDE POLICY: A PESTICIDE/HERBICIDE WORK PLAN MUST BE SUBMITTED THAT WILL ADDRESS:
 - * LOCATION
 - * TERRAIN
 - * NEARBY WATERS/WETLANDS/INTERMITTENT STREAMS
 - * TIME OF YEAR
 - * TIME OF DAY FOR APPLICATION
 - * PROXIMITY TO VISITOR USE AREAS
 - * NUMBER OF PERSONNEL FOR THE PROJECT
 - * ACCESS TO THE WORK SITE
 - * NUMBER OF DAYS ANTICIPATED
 - * APPLICATION TECHNIQUES
 - * EQUIPMENT TO BE USED.

PLAN MUST ALSO INCLUDE A SAFETY PLAN THAT WILL OUTLINE THE PROJECT'S PERSONAL PROTECTIVE EQUIPMENT TO BE USED.

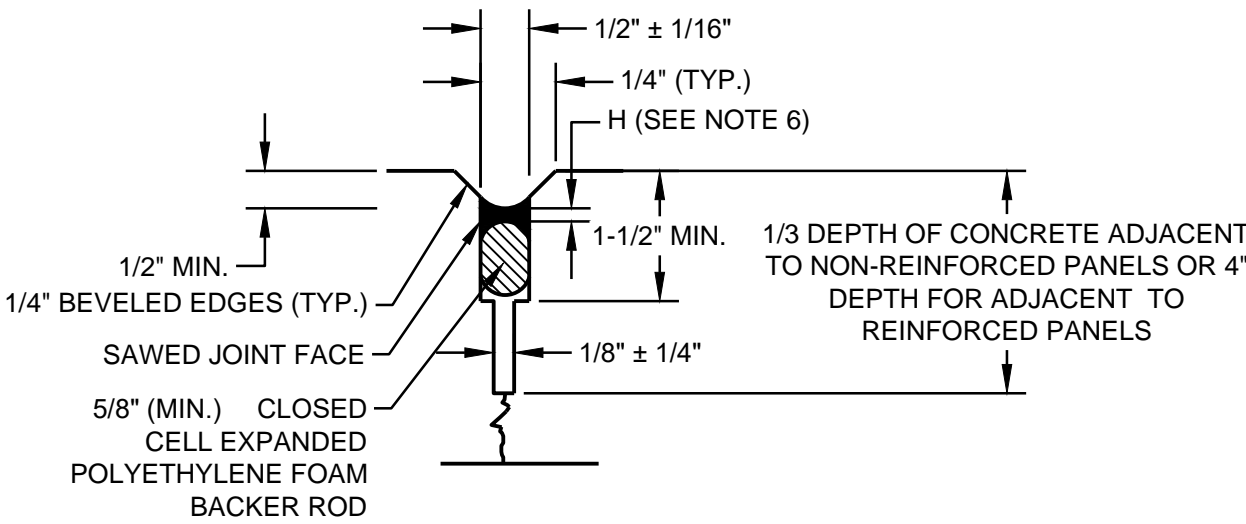
ONLY NPS APPROVED HERBICIDES MUST BE USED. SEE [HTTP://IRMA.NPS.GOV/PUPS/](http://irma.nps.gov/pups/) FOR THE MOST UP TO DATE LIST OF APPROVED HERBICIDES/PESTICIDES. APPLICATION OF THIS HERBICIDE MUST BE BY LICENSED APPLICATORS. ALL PROPOSED WORK MUST BE REVIEWED BY THE INTEGRATED PEST MANAGEMENT COORDINATOR IN THE PARK. CONTRACTOR MUST SUBMIT A PROPOSAL FOR HERBICIDE USE WITH THE PROPOSED AMOUNT AND ACREAGE TREATED TO NCDOT. CONTRACTOR MUST TRACK AND LOG ALL HERBICIDE USE ON THE OBG PESTICIDE USE LOG AND SUBMIT SEVEN (7) DAYS PRIOR TO THE END OF THE CALENDAR YEAR TO NCDOT. PESTICIDE USE LOG IS INCLUDED AS APPENDIX B OF THE TECHNICAL SPECIFICATIONS.



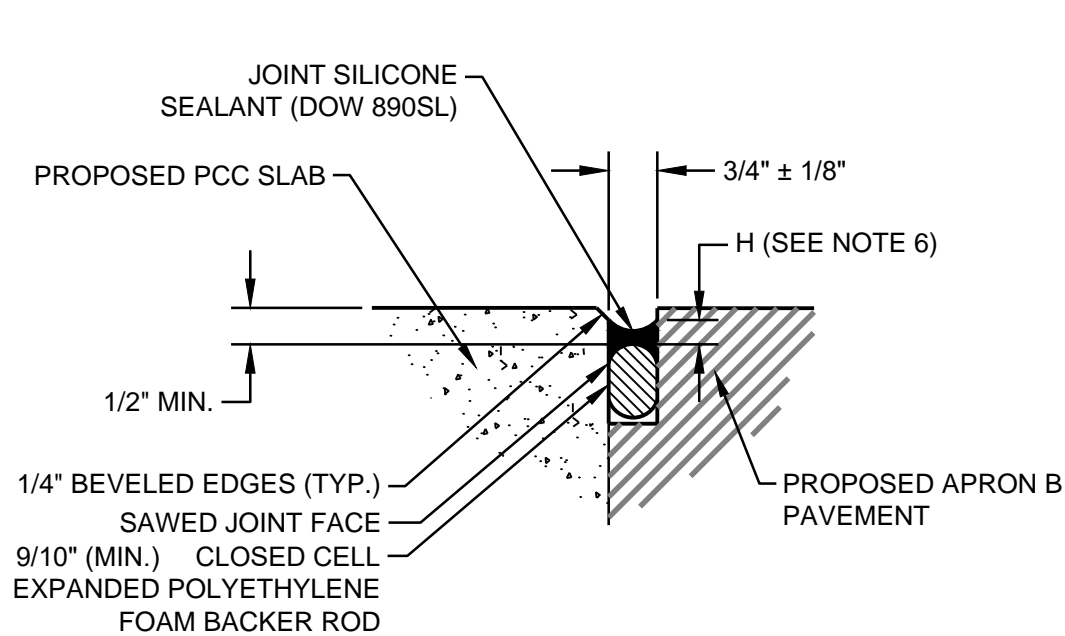
1 HELICOPTER STAND PAVEMENT SECTION
C5.02 SCALE: NTS



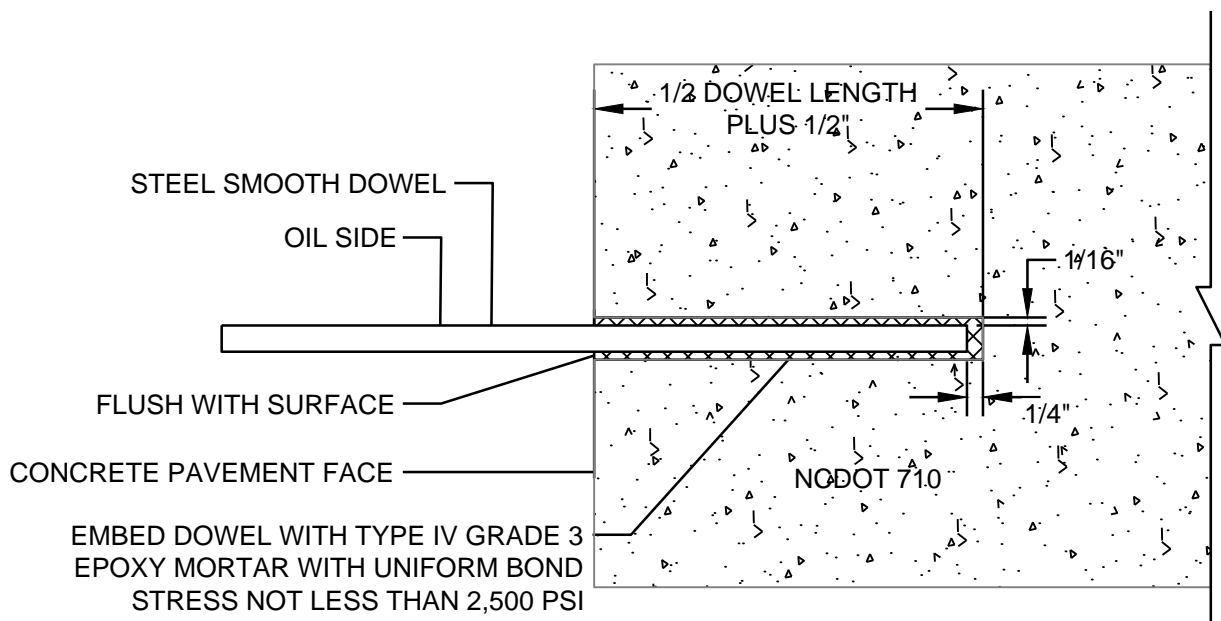
3 TYPE 'C' DOWELED CONTRACTION JOINT
C5.02 SCALE: NTS



4 CONTRACTION JOINT
C5.02 SCALE: NTS



5 TYPE 'K' CONCRETE TO ASPHALT INTERFACE JOINT
C5.02 SCALE: NTS

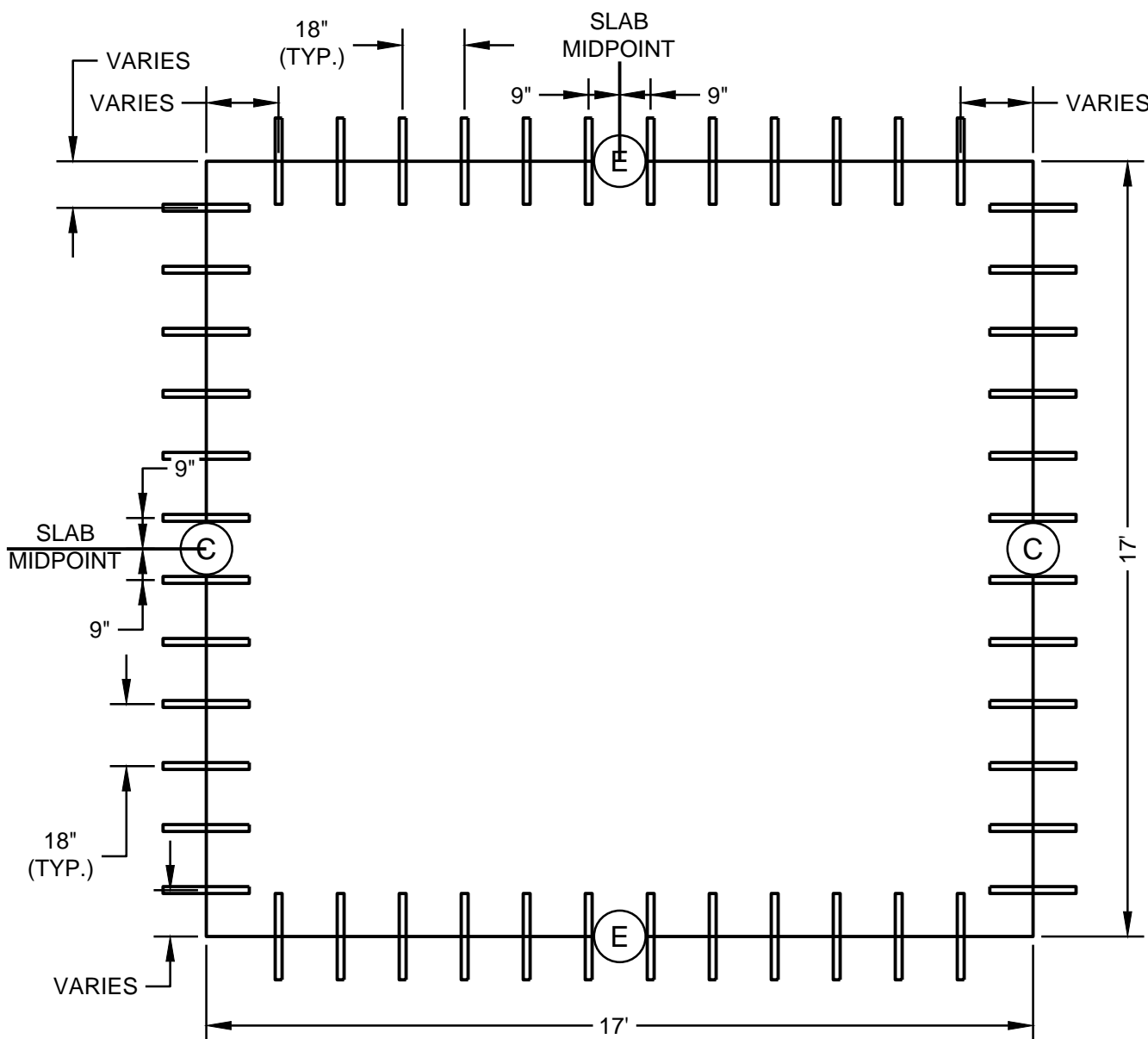
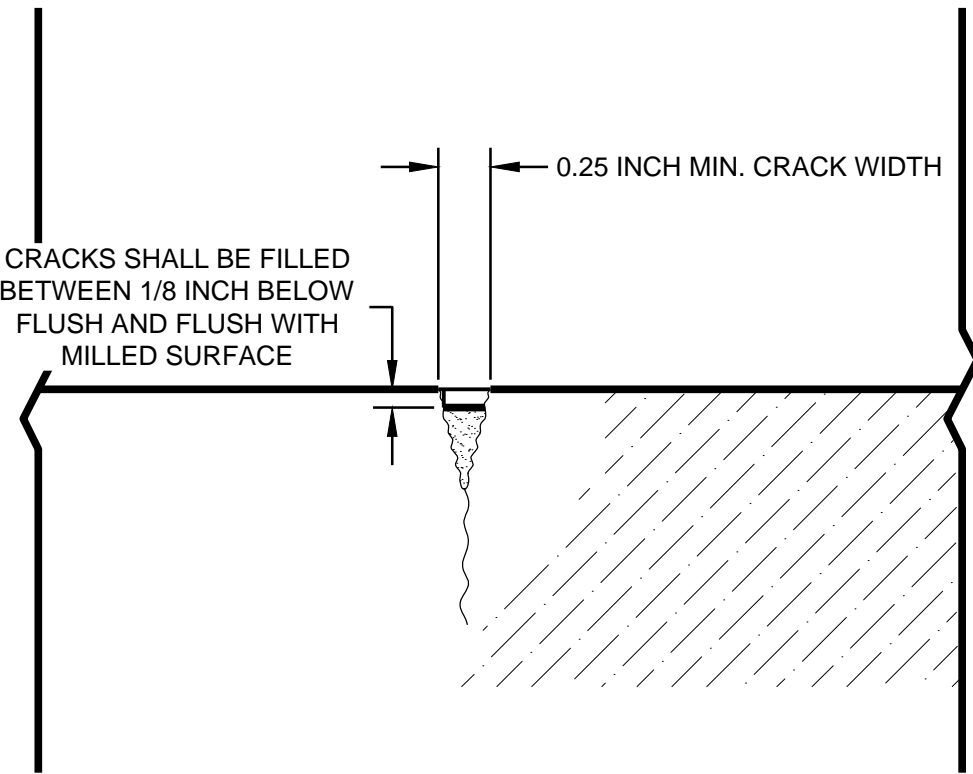


6 EPOXY GROUT DOWEL / TIE BAR INSTALLATION
C5.02 SCALE: NTS

JOINT DETAIL NOTES:

- JOINTS MUST NOT INTERSECT THE EDGE OF THE PAVEMENT NOR ANY OTHER JOINT AT AN ANGLE OF LESS THAN 90 .
- DOWEL BASKETS MUST BE FIRMLY ATTACHED TO THE EXISTING UNDERLYING COURSE PRIOR TO PLACING P.C.C.
- PAVEMENT AREAS WHERE THICKENED EDGE JOINTS OCCUR MUST BE CONSTRUCTED SO THAT DOWEL BARS ARE PLACED PARALLEL TO THE FINAL SURFACE AND MAINTAIN A MINIMUM DEPTH OF 1.25T/2 (11.25\"/>
- ANY PAVEMENT SHOWN WITH THICKENED EDGE JOINTS WILL BE PAID FOR AS NOMINAL THICKNESS (T) PAVEMENT.
- DOWEL DRILLING METHOD MUST BE CAPABLE OF MAINTAINING DRILL HOLES PARALLEL TO THE CONCRETE SURFACE AND NORMAL TO THE JOINT LINE WITHIN 1/4\"/>
- SEALANT DIMENSION H IS BASED ON MANUFACTURER RECOMMENDATIONS.
- THE DOWEL BAR OR TIE BAR SPACING MUST BE STARTED FROM THE INSIDE OF THE JOINT AT 12 INCH TO 18 INCH (12 INCH MIN.) SPACING FROM THE JOINT EDGE. IF THE SPACING DOES NOT ALLOW FOR AN 18 INCH SPACING AT THE CENTER OF THE SLAB AND THE REMAINING OPENING IS GREATER THAN 18 INCHES THEN A BAR MUST BE PLACED IN THE CENTER OF THE REMAINING SPACE. IF THE REMAINING SPACE IS LESS THAN 18 INCHES, NO ADDITIONAL BAR WILL BE REQUIRED.
- REFER TO TABLE 1: DIMENSIONS AND SPACING OF STEEL DOWELS ON THIS SHEET.

2 ASPHALT PAVEMENT CRACK REPAIR DETAILS BY OTHERS
C5.02 SCALE: NTS



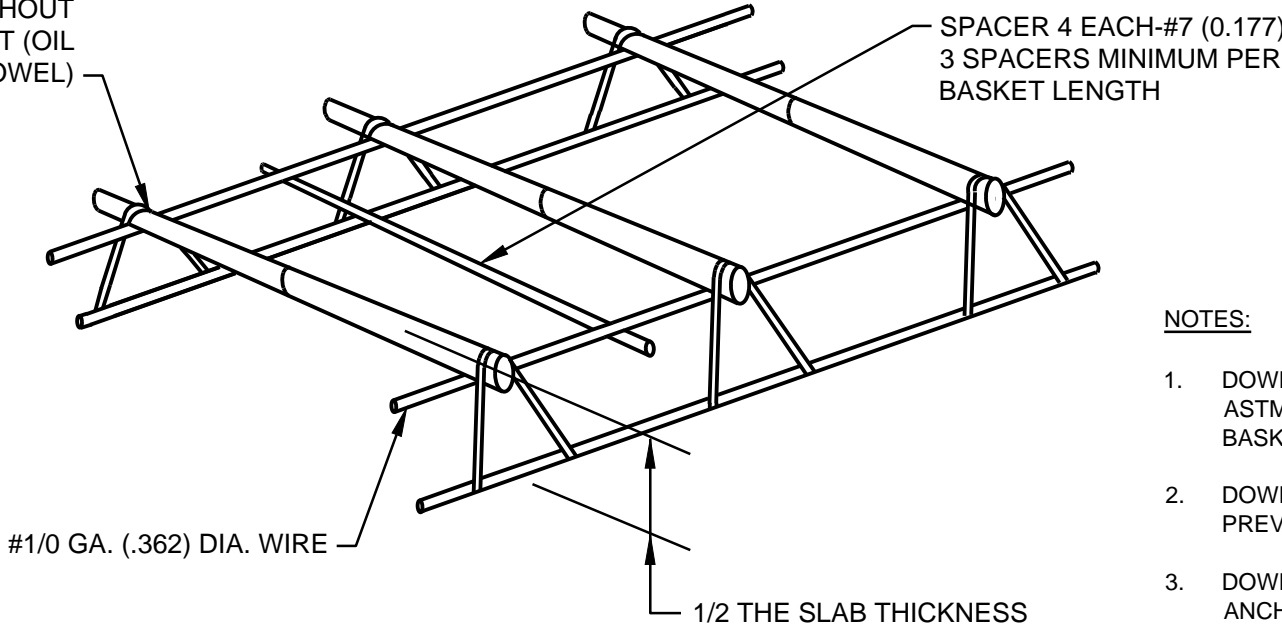
7 DOWEL SPACING DETAIL
C5.02 SCALE: NTS

NOTE:

REFER TO JOINT DETAILS NOTES SHOWN ON THIS SHEET.

TABLE 1: DIMENSIONS AND SPACING OF STEEL DOWELS			
SLAB THICKNESS (T)	DIAMETER	LENGTH	SPACING
18"	1 1/2"	20"	18"

WELD DOWELS TO BASKET AND ALTERNATE SIDES FOR EACH DOWEL WELD THROUGHOUT LENGTH OF BASKET (OIL NON-WELDED HALF OF DOWEL)



8 CONTRACTION JOINT DOWEL BASKET
C5.02 SCALE: NTS

NOTES:

- DOWELS MUST BE EPOXY COATED PER ASTM A1078 AND HELD FIRMLY TO THE BASKET ASSEMBLY.
- DOWEL CUT ENDS CAN BE PAINTED TO PREVENT RUSTING.
- DOWEL BASKETS MUST BE FIRMLY ANCHORED TO GRADE.
- DOWELS AND PLACEMENT ARE INCIDENTAL TO NCDOT 710.